

FUEL SHUT OFF VALVE 01 - USER GUIDE

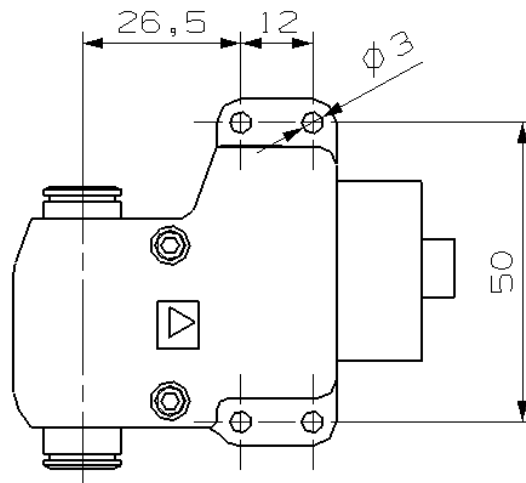
Introduction

Thank you for purchasing our fuel shut off valve (SOV). This valve is primarily dedicated to be installed in the fuel system of the turbine engine powered RC models. Please familiarize with this user guide prior to SOV use.

Specification

Servo operated fuel shut off valve.

Dimensions L x W x H	74x58x20mm
Weight	84g
Operating voltage	4.8/6V
Current	300/400mA
Closing speed	<0.5s
Max. operating pressure	9bar
Operating temperature	-20°C ÷ +50°C
Valve type	Ball valve
Bore	5mm
Seats	PTFE
Seals	NBR, FKM
Connection	Push in fittings for OD calibrated 6mm tube
Electrical connection	Standard JR servo connector

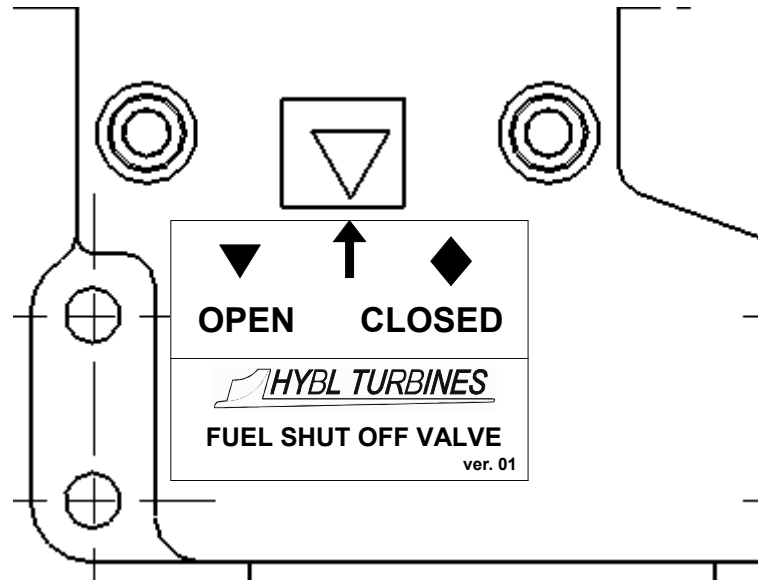


Installing instructions

1. SOV should be installed as close as possible to the fuel tanks.
2. Do not use excessive force when bolting the SOV to the wall.
3. Use only high quality OD calibrated 6mm tubes to connect the SOV
4. Always perform leak check of the fuel system whenever disconnecting/connecting SOV.

Calibration

Adjust the transmitter channel so that the triangle sign is against arrow for open position and the diamond sign for closed position as shown in the following picture.



Safety instructions

SOV is intended for installation into other systems, it can not work alone. No specific safety instructions apply.

When operating turbine engine always follow the instruction specified in the engine manual.

Always use within the limits defined in Specification chapter.

Keep out of reach of children.

Maintenance

No specific maintenance required.

In case servo failure, it can be replaced with the Corona CS-239MG type servo.

Warranty Cover

The warranty covers the free repair or replacement of parts with proven defects of manufacturing or material defects within the warranty period of 2 years from the date of purchase. Any further claims are excluded. Warranty and after service is provided by the manufacturer. Costs for packaging and shipping are paid by the Owner. No liability is assumed for loss during transport. When sending the defective article to the Manufacturer a detailed description of the fault, the invoice stating the date of purchase must be included. The warranty is void if the defect of the part or the model is caused by an accident, improper handling or improper use.

Liability claim

Manufacturer is not liable for any injuries, damage, losses or costs caused by use of the SOV. Under any circumstances the joint liability is limited to the price paid for the SOV.

In case you are not ready to fully accept this liability claim statement it is advised you return the SOV immediately in unused condition to the seller.

Manufacturer:

Hybl Turbines s.r.o.

Marty Krasove 922/1

Prague, 19600

Czech republic

hybl.turbines@seznam.cz